



DOPPSTADT



trommel screens



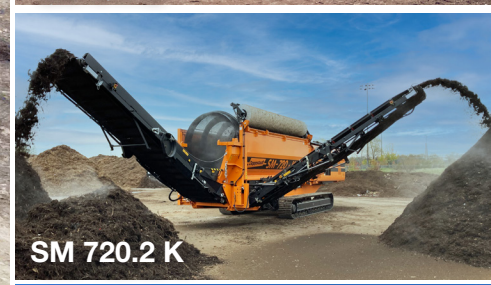
No one builds a better trommel. Doppstadt has earned its place as North America's #1 brand through precision engineering, high-quality components, and efficiency that consistently outperforms the competition. Lowering your cost of throughput and material production on every job.



SM 720.3



SM 617.2



SM 720.2 K



SM 726.2 SA

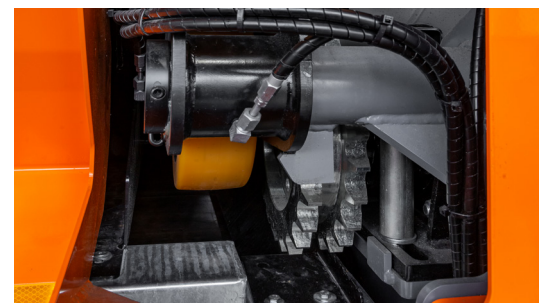
INNOVATIVE FEATURES ON DOPPSTADT TROMMEL SCREENS



Auto load sensing varies the material flow from the hopper to consistently maintain peak output.



The laser-cut, auger-style drum design provides best-in-class open screening area.



The trommel drum is driven by a double chain and sprocket that delivers exceptional torque.

ENGINEERED TO OUTPERFORM

Built on experience. Backed by results.

Dopstadt trommels are engineered to handle the full spectrum of screening applications: compost, mulch, topsoil, aggregates, C&D, MSW, and more. Best-in-class fuel efficiency, effortless operation, and precision screening mean one thing, nothing else in the industry comes close.

Consistent performance, every shift, every job.

Every SM Series trommel features automatic load-sensing for maximum screening efficiency, a hydraulically tensioned cleaning brush, and a quick-change drum design for fast, flexible sizing. More uptime, fewer interruptions, and an operation that never misses a beat.

Maintenance is equally straightforward. The swing-out engine, centralized lubrication points, and multiple access doors keep routine service simple and fast. Need to change screen sizes? Lift the drum off the urethane wheels, drop in a new one, and you're back to work in 15 minutes. Because a trommel should work around your schedule, not the other way around.

Further expand your capabilities with optional add-ons including tipping/vibrating grids, remote control, magnetic head pulleys, star screen inserts, mulch coloring systems, hopper extensions, and more.

Efficiency that shows up on your bottom line.

No matter the application, the SM Series runs at peak performance with a single operator. More efficiency, lower production costs, and a machine built to deliver every time.



An optional 9.6 yd³ hopper offers a low feed height and is driven by twin gear drives.



The entire engine unit swings out 90° from the machine for convenient maintenance access.

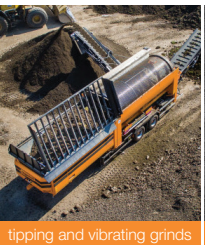


True modular construction allows easy access for operators and technicians.

DOPPSTADT TROMMEL MODELS AND SPECS

		SM 617.2	SM 720.3	SM 720.2 SA	SM 726.2 SA	SM 720.2 K
DRIVE						
TYPE		Duetz TCD 2.9 L4	Duetz TCD 2.9 L4	Duetz TCD 3.6 L4	Duetz TCD 3.6 L4	Duetz TCD 3.6 L4
POWER		75hp / 55kW	75hp / 55kW	114hp / 85kW	114hp / 85kW	114hp / 85kW
FUEL TANK		80g diesel	70g diesel	106g diesel	106g diesel	106g diesel
EMISSIONS		Tier V final	Tier V final	Tier V final	Tier V final	Tier V final
CHASSIS						
TYPE		central axle	central axle	fifth wheel, 2 axles	fifth wheel, 2 axles	steel tracks
FEED HOPPER		6.5 yd ³	6.5 yd ³	9.5 yd ³	9.5 yd ³	9.5 yd ³
LOADING HEIGHT		9' 6"	9' 6"	9' 6"	9' 6"	9' 6"
DRUM						
LENGTH		17'	20'	20'	26'	20'
DIAMETER		6'	7'	7'	7'	7'
SPEED		0-21 rpm	0-21 rpm	0-21 rpm	0-21 rpm	0-21 rpm
CONVEYORS						
SIDE LENGTH		18'	18'	18'	18'	17' 3"
SIDE WIDTH		32"	40"	40"	40"	40"
REAR LENGTH		18'	18'	18'	18'	18'
REAR WIDTH		32"	40"	40"	40"	40"
TRANSPORT DIMENSIONS						
LENGTH		36' 1"	38' 9"	38' 5"	43' 5"	42'
WIDTH		8' 4"	8' 4"	8' 2"	8' 4"	9' 8"
HEIGHT		13' 1"	13' 1"	13' 2"	13' 2"	11' 2"
TOTAL WEIGHT		37,479lbs	42,000lbs	48,000lbs	52,911lbs	57,500lbs

AVAILABLE OPTIONS



tipping and vibrating grinds



multi-channel remote control



magnetic head pulleys



star screen insert



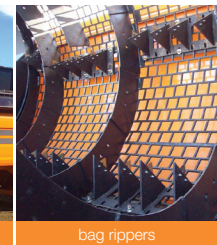
windsifter attachment



mulch coloring system



hopper extensions



bag rippers

DOPPSTADT



ECOVERSE.NET

440-937-3225



ECO-111 4/26 250