



# ***Doppstadt***

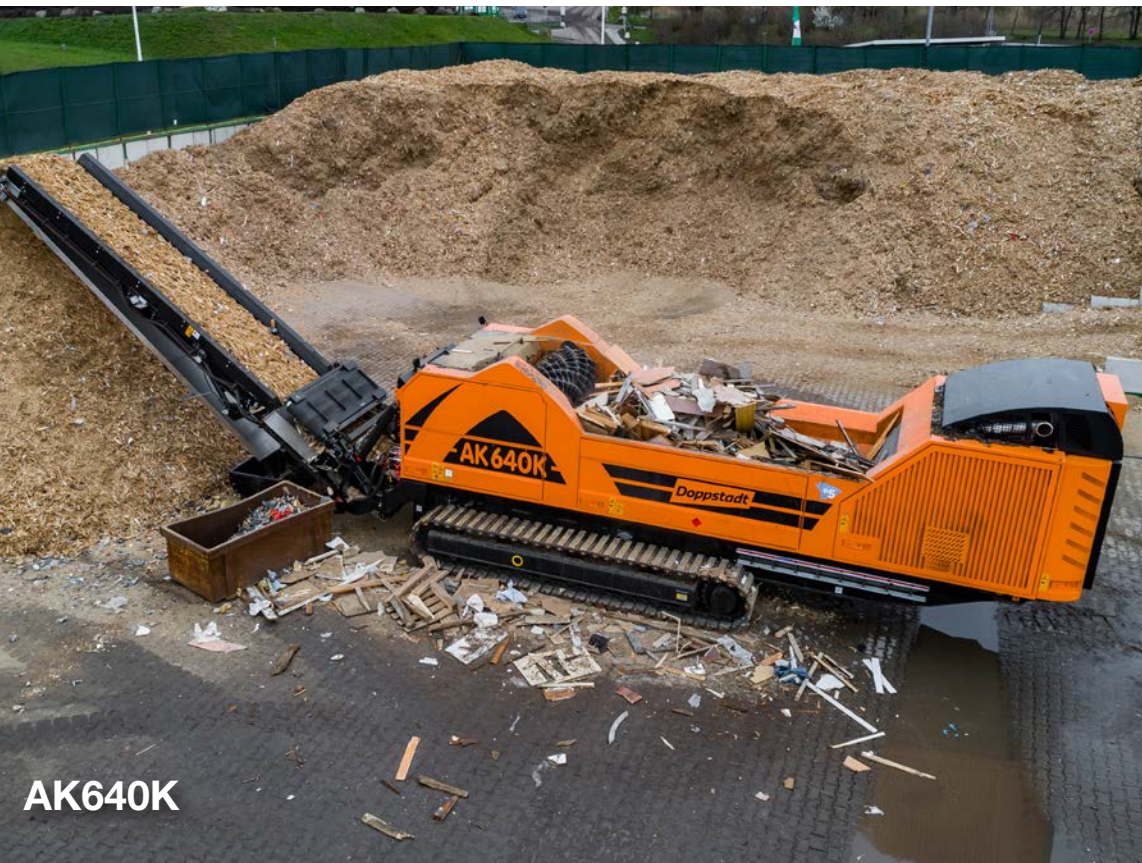


**high-speed grinders**



Designed with a collection of innovative features, the Doppstadt AK Series of horizontal, high-speed grinders are engineered to produce hundreds of yards of finished material every day.

These machines handle all types of organic feedstocks, wood waste, shingles, dry wall, and even C&D. Why not build your business on the back of a Doppstadt AK Series grinder?



AK640K



AK640SA

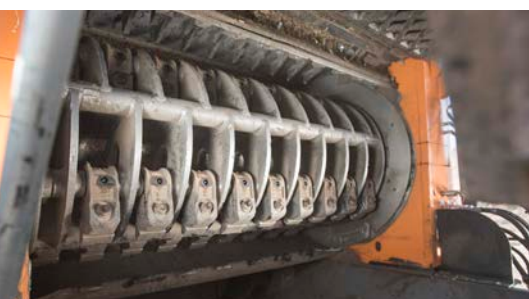


AK565K



AK315

## INNOVATIVE FEATURES ON DOPPSTADT HIGH-SPEED GRINDERS



The aggressive, free-swinging hammers protect themselves from contaminants.



Intuitive, user-friendly control panel and dynamic remote control.



Total and easy access to the all the machine components and engine.

# INNOVATIVE SOLUTIONS TO UNIQUE PROBLEMS

## Finish to your spec.

Doppstadt AK Series grinders are highly efficient machines that are used for a variety of applications. These powerful machines process waste wood, green waste, organic matter, shingles, dry wall, or RDF and create finished products to your spec. With a portable range of wheeled and tracked units in three different sizes, there is a grinder for your operational footprint and your budget.

## Quality engineering for quality work.

The AK machines use a load-sensing scraper floor and an aggressive feed roller that ensures material is optimally fed into the hammer mill. This means less downtime, better fuel consumption, and a more consistent finished product with a longer life on wear parts. Additionally, AK grinders feature a fail-safe in case of contaminants: a nitrogen accumulator will kick open the screen grate to stop catastrophic mill damage from contaminated feedstocks.

The upswing-flail hammer mill reaches 1140 RPM, and the carbide-tipped replaceable hammers can be changed out in minutes. Several hammer and screen configuration options are available depending on the application.

With Tier-5 engine technology and best-in-class fuel consumption, AK grinders are as efficient as they are reliable. Technicians have complete operational and diagnostic control through the intuitive control panel and the hand-held remote control, and telematic monitoring allows a factory technician access to the machine for remote support. Need to change screens? Those can be swapped out in 15 minutes.

## The complete package for your application.

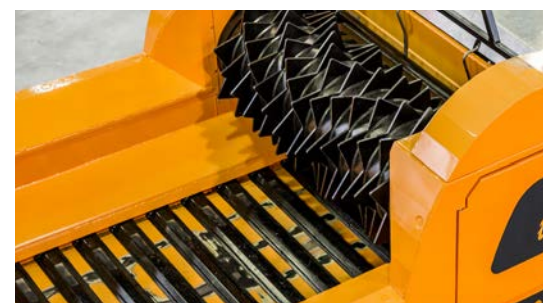
AK Series grinders are customizable for your application. Options include hopper extensions, various screen grate sizes (between 1 & 8-inch), a 60-inch lowerable rear discharge conveyor, a water spray system, a neodymium cross band magnet, a magnetic head pulley and chute, and a food-pedal expansion kit.



Track and grind simultaneously with the two-speed, heavy-duty tracked undercarriage.



Various screen sizes available, and all screens are easily changed in 15 minutes.



Load-sensing scraper floor and feed roller ensure maximum production and efficiency.

# DOPPSTADT GRINDER MODELS AND SPECS

	<b>AK315</b>	<b>AK565 Plus</b>	<b>AK565K</b>	<b>AK640SA</b>	<b>AK640K</b>
<b>DRIVE</b>					
TYPE	MTU 6R 1000	MTU 6R 1300	MTU 6R 1300	MTU 6R 1500	MTU 6R 1500
POWER	308 hp / 230 kW	523 hp / 390 kW	523 hp / 390 kW	617 hp / 460 kW	644 hp / 480 kW
FUEL TANK	80 g diesel	158 g diesel	158 g diesel	238 g diesel	200 g diesel
<b>CHASSIS</b>					
TYPE	2-axle trailer	3-axle trailer	steel tracks	semi-trailer	steel tracks
HOPPER LOADING HEIGHT	6' 7"	7' 4"	7' 3"	7' 9"	7' 2"
<b>MILL</b>					
WIDTH	57"	69"	69"	69"	69"
DIAMETER	35"	44"	44"	44"	44"
# OF HAMMERS	16/28 (two rows)	36	36	36	36
SPEED	1140 - 1320 RPM	850 -1000 RPM	850 -1000 RPM	970 -1140 RPM	970 -1140 RPM
<b>CONVEYORS</b>					
REAR LENGTH	19' 6"	19' 6"	24' 7"	24' 7"	24' 7"
REAR WIDTH	59"	70"	60"	60"	60"
REAR DISCHARGE HEIGHT	11' 6"	14'	16' 7"	17' 5"	16' 7"
<b>TRANSPORT DIMENSIONS</b>					
LENGTH	30' 3"	32' 8"	28' 4"	39' 3"	32' 10"
WIDTH	6' 9"	8' 2"	9' 8"	8' 3"	9' 8"
HEIGHT	10' 2"	12' 5"	11' 2"	12'	11' 2"
TOTAL WEIGHT	35,273 lbs	48,501 lbs	63,934 lbs	70,547 lbs	71,650 lbs



## AVAILABLE OPTIONS



neodymium magnet



various screen baskets



lowerable rear conveyor



magnetic head pulley



aggressive feed roller



dust suppression system



reinforced hopper



hopper extensions



[ECOVERSE.NET](http://ECOVERSE.NET)

440-937-3225

ECO-113 6/23 2000